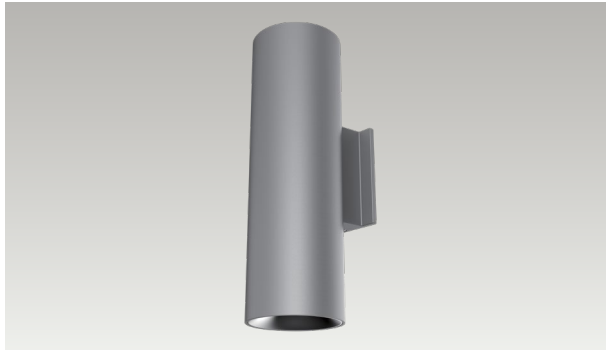


ADVANCED HIGH CEILING

Lance 6 - RGB Uplight / White Downlight



High Performing Outdoor Luminaire

Built to last, the Lance 6 is a 6-inch round outdoor wall mount cylinder with a combined lumen package range from 3,430 lm to 10,018 lm. Available in a variety of configurations, this IP 65 rated luminaire has W+RGB color tuning technology to make a bold architectural statement.

Quantity	Type
Projec	Note

Electrical System

- 4287 lm (60W) Uplight: 30W / Downlight: 30W
- Power Input: Universal (120-277V)
- Operating Temperature: 14°F~104°F
- Surge Protection: 2.5KV

LED Technology

- Downlight: 2700K, 3000K, 3500K, 4000K, NA (Sodium)
- Uplight: Wavelength R 645 nm, G 520 nm, B 445 nm
- 85 CRI, 93 CRI
- Beam Angle:
Down: 40°, 60°, WD
Up: 40°, 60°, WD
- Rated Life > 60,000 Hours (L70)

Housing

- Diameter: 1.5" (40mm)
- Height: 8.5" (216.5mm)
- Material: Aluminum
- Weight: 1.3 l

Warranty

- 5year limited warranty

Listing

- ETL Wet Location Listed
- IP65

Advanced Dimming

- (Proprietary VX Driver is incorporated to all dimming options for video flicker-free lighting)
- DMX: high resolution dims to 0.1% (Supports ANSI E1.20 RDM protocol)



Lance 6 - RGB Uplight / White Downlight




How to Specify:

Ordering Example: LA6-60-408RGB-UNV-SPV-4040-BLK

4-5 weeks lead time on over 75% of specifications.

Model	Wattage	CCT / CRI	Voltage
LA6			UNV
LA6 Lance 6	60 Downlight: 30W Uplight: 30W	Downlight 278 2700K / CRI85 308 3000K / CRI85 358 3500K / CRI85 408 4000K / CRI85 279 2700K / CRI93 309 3000K / CRI93 359 3500K / CRI93 409 4000K / CRI93 Uplight RGB RGB	UNV 120-277V
	NOTE: Contact Factory for only downlight option		

Dimming	Beam Angle	Color	Finish	Accessories
DMX				
DMX DMX dims to 0.1%	Downlight 40 40° 60 60° WIDE ¹ WIDE Uplight 40 40° 60 60° WIDE ¹ WIDE ¹ Please factor in change in lumen output of -12%	BLK Black WHT White GRY Gray BRZ Bronze  BLK WHT GRY BRZ	STD Standard NAT Natatorium Rated MAR Marine Finish	FW ¹ Forward Throw WW ¹ Wall Wash 20° LL ¹ Linear Lens HC ² Honeycomb Louver ¹ Please factor in change in lumen output of -20% ² Please factor in change in lumen output of -30%. Honeycomb Louver applicable only to downlight.

Lance 6 - RGB Uplight / White Downlight



Delivered Lumens*

Uplight	Color	R	G	B	
	Wattage	150 lm	1010 lm	122 lm	
Downlight	CCT	2700K	3000K	3500K	4000K
	Wattage	2661 lm	2890 lm	2960 lm	3005 lm

Current Consumption

Wattage	120V	277V
60W	0.55A	0.24A

*Tolerance ± 8%

DMX Requirements*

The Lance 6 RGB Uplight fixture with DMX is a **FOUR CHANNEL DMX unit**.
When placing order, please indicate DMX address.

Fixture	DMX Address			
	Uplight			Downlight
	Red Control (ex. X)	Green Control (ex. X+1)	Blue Control (ex. X+2)	White Control (ex. X+3)
#1	1	2	3	4
#2	5	6	7	8
#3	9	10	11	12

- When placing order, please indicate DMX address. (The DMX address will be listed on the back of the fixture.)
- The LED fixture will have 2 DMX positive / Negative wires for connection.
- The final fixture should be terminated by the use of DMX Terminator (by others).

Dimensions

