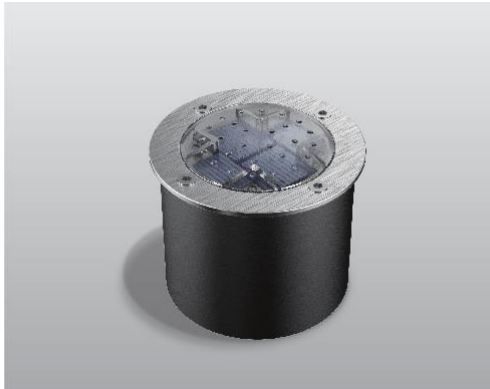


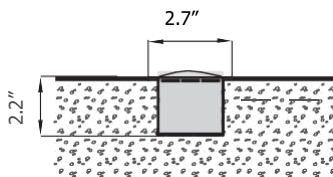
ADVANCED HIGH CEILING

# SH-200 - Solar LED Ground Lights

Water Proof / No Wiring



METEOR Solar LED Ground lights incorporate state-of-the-art technology, combining the best solar panels, power storage and optical design to create products that will function for years to come.



Quantity
Project
Note
Type

**General**

Weight: 0.55 lbs  
 Rim Finish: Brushed/Polished stainless steel; Optional: SUS316 stainless steel / Brass  
 Lens: GE super light permeable PC  
 Housing: SUS304 stainless steel, cast aluminum  
 Power Storage: Ultracapacitor

**Operational**

Operation Time: Minimum 12 hours (fully charged) 4-8 hours (overcast)  
 Full Charge Time: 6 hours (direct sunlight)  
 Switch: Light sensitive auto on/off

**Environmental**

Compressive Strength: 9902 lbs/4456 kgs(maximum)  
 Operating Temperature: -4° F to 140° F  
 Storage Temperature: -13° F to 176° F

**Warranty**

3 year limited warranty. See [www.meteor-lighting.com](http://www.meteor-lighting.com) for details.



**How To Specify**

**Ordering Example: SH200C-AMB-BS**

Model	CCT	Finish	Housing
<b>SH200C</b> (Product)	<b>AMB</b> (Amber)	<b>BS</b> (Brushed Stainless Steel)	<b>HS*</b> (Housing)
<b>SH200B</b> (Battery sample)	<b>BLU</b> (Blue)	<b>PS</b> (Polished Stainless Steel)	
	<b>GEN</b> (Green)	<b>SS</b> (SUS316 Stainless Steel)	
	<b>RED</b> (Red)	<b>BR</b> (Brass)	
	<b>WHT</b> (White/5500-6000K)		
	<b>WAM</b> (Warm White/2800-3000K)		* Anchor Plate Not Included

*Color	LUX(Average)
White	25
Amber	25
Red	50
Blue	20
Green	55
Warm White	25